

Test Report

No. SH9169458/CHEM

Date: Sep. 4, 2009

Page 1 of 4

SHANGHAI RICHENG ELECTRONICS CO., LTD
SHANGHAI OLD HUMIN ROAD CHINA

The following sample(s) was/were submitted and identified by/on behalf of the client as:

Sample Name : WIRING DUCT
SGS Ref No. : 12135142
Part No. : RCCN
Main Substance : ROHS PVC

Sample Receiving Date : Sep.01, 2009
Testing Period : Sep.01 – 04, 2009

Test Requested : In accordance with the RoHS Directive 2002/95/EC, and its amendment directives

Test Method : (1) With reference to IEC 62321:2008 for Cadmium content.
Analysis was performed by ICP-OES.
(2) With reference to IEC 62321:2008 for Lead content.
Analysis was performed by ICP-OES.
(3) With reference to IEC 62321:2008 for Mercury content.
Analysis was performed by ICP-OES.
(4) With reference to IEC 62321:2008 for Hexavalent Chromium by Colorimetric Method.
(5) With reference to IEC 62321:2008 for PBBs / PBDEs content.
Analysis was performed by GC/MS.

Test Results : Please refer to next pages

Signed for and on behalf of
SGS-CSTC Chemical Laboratory

Sandy Hao

Sandy Hao
Lab Manager

This document is issued by the Company subject to its General Conditions of Service printed overleaf, available on request or accessible at http://www.sgs.com/terms_and_conditions.htm and, for electronic format documents, subject to Terms and Conditions for Electronic Documents at www.sgs.com/terms_e-document.htm. Attention is drawn to the limitation of liability, indemnification and jurisdiction issues defined therein. Any holder of this document is advised that information contained hereon reflects the Company's findings at the time of its interpretation only and within the limits of Client's instructions, if any. The Company's sole responsibility is to its Client and this document does not exonerate parties to a transaction from exercising all their rights and obligations under the transaction documents. This document cannot be reproduced except in full, without prior written approval of the Company. Any unauthorized alteration, forgery or falsification of the content or appearance of this document is unlawful and offenders may be prosecuted to the fullest extent of the law. Unless otherwise stated the results shown in this test report refer only to the sample(s) tested.

SHCHEM 2885136

Test Report

No. SH9169458/CHEM

Date: Sep. 4, 2009

Page 2 of 4

Test results by chemical method (Unit: mg/kg)

Test Item(s):	Method (refer to)	1	MDL	RoHS Limit
Cadmium(Cd)	(1)	ND	2	100
Lead (Pb)	(2)	ND	2	1000
Mercury (Hg)	(3)	ND	2	1000
Hexavalent Chromium (CrVI)	(4)	ND	2	1000
Sum of PBBs	(5)	ND	-	1000
Monobromobiphenyl		ND	5	-
Dibromobiphenyl		ND	5	-
Tribromobiphenyl		ND	5	-
Tetrabromobiphenyl		ND	5	-
Pentabromobiphenyl		ND	5	-
Hexabromobiphenyl		ND	5	-
Heptabromobiphenyl		ND	5	-
Octabromobiphenyl		ND	5	-
Nonabromobiphenyl		ND	5	-
Decabromobiphenyl		ND	5	-
Sum of PBDEs		ND	-	1000
Monobromodiphenyl ether		ND	5	-
Dibromodiphenyl ether		ND	5	-
Tribromodiphenyl ether		ND	5	-
Tetrabromodiphenyl ether		ND	5	-
Pentabromodiphenyl ether		ND	5	-
Hexabromodiphenyl ether		ND	5	-
Heptabromodiphenyl ether		ND	5	-
Octabromodiphenyl ether		ND	5	-
Nonabromodiphenyl ether		ND	5	-
Decabromodiphenyl ether##		ND	5	-

Test Part Description:

1. Grey plastic

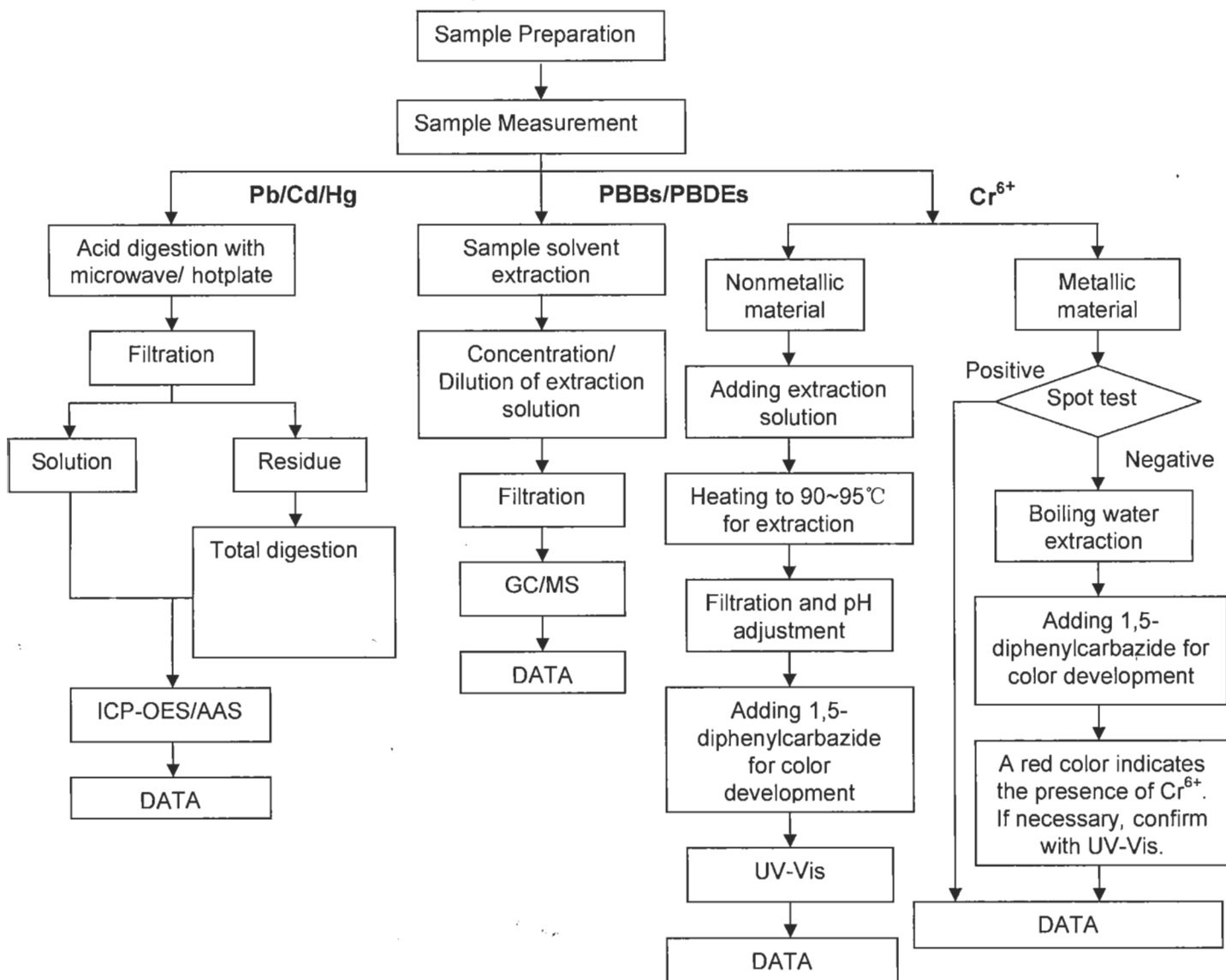
Note:

- (1) mg/kg = ppm
- (2) ND = Not Detected
- (3) MDL = Method Detection Limit
- (4) ##=The exemption of DecaBDE in polymeric application according 2005/717/EC was overruled by the European Court of Justice by its decision of 01.04.2008. Subsequently DecaBDE is included in the sum of PBDE after 01.07.2008.
- (5) "-" = Not Regulated
- (6) The maximum permissible limit is quoted from the document 2005/618/EC amending RoHS directive 2002/95/EC

This document is issued by the Company subject to its General Conditions of Service printed overleaf, available on request or accessible at http://www.sgs.com/terms_and_conditions.htm and for electronic format documents, subject to Terms and Conditions for Electronic Documents at www.sgs.com/terms_e-document.htm. Attention is drawn to the limitation of liability, indemnification and jurisdiction issues defined therein. Any holder of this document is advised that information contained hereon reflects the Company's findings at the time of its issuance only and within the limits of Client's instructions, if any. The Company's sole responsibility is to its Client and this document does not exonerate parties to a transaction from exercising all their rights and obligations under the transaction documents. This document cannot be reproduced except in full, without prior written approval of the Company. Any unauthorized alteration, forgery or falsification of the content or appearance of this document is unlawful and offenders may be prosecuted to the fullest extent of the law. Unless otherwise stated, the results shown in this test report refer only to the sample(s) tested.

ATTACHMENTS

- 1) Name of the person who made measurement: Jeff Zhang/Even Xu/Frank Fang/Elm Lin
- 2) Name of the person in charge of measurement: Terry Wang/Phoebe Shen
- 3) These samples were dissolved totally by pre-conditioning method according to below flow chart. (Cr^{6+} and PBBs/PBDEs test method excluded)



This document is issued by the Company subject to its General Conditions of Service printed overleaf, available on request or accessible at http://www.sgs.com/terms_and_conditions.htm and, for electronic format documents, subject to Terms and Conditions for Electronic Documents at www.sgs.com/terms_e-document.htm. Attention is drawn to the limitation of liability, indemnification and jurisdiction issues defined therein. Any holder of this document is advised that information contained hereon reflects the Company's findings at the time of its interpretation only and, within the limits of Client's instructions, if any. The Company's sole responsibility is to its Client and this document does not exonerate parties to a transaction from exercising all their rights and obligations under the transaction documents. This document cannot be reproduced except in full, without prior written approval of the Company. Any unauthorized alteration, forgery or falsification of the content or appearance of this document is unlawful and offenders may be prosecuted to the fullest extent of the law. Unless otherwise stated, the results shown in this test report refer only to the sample(s) tested.

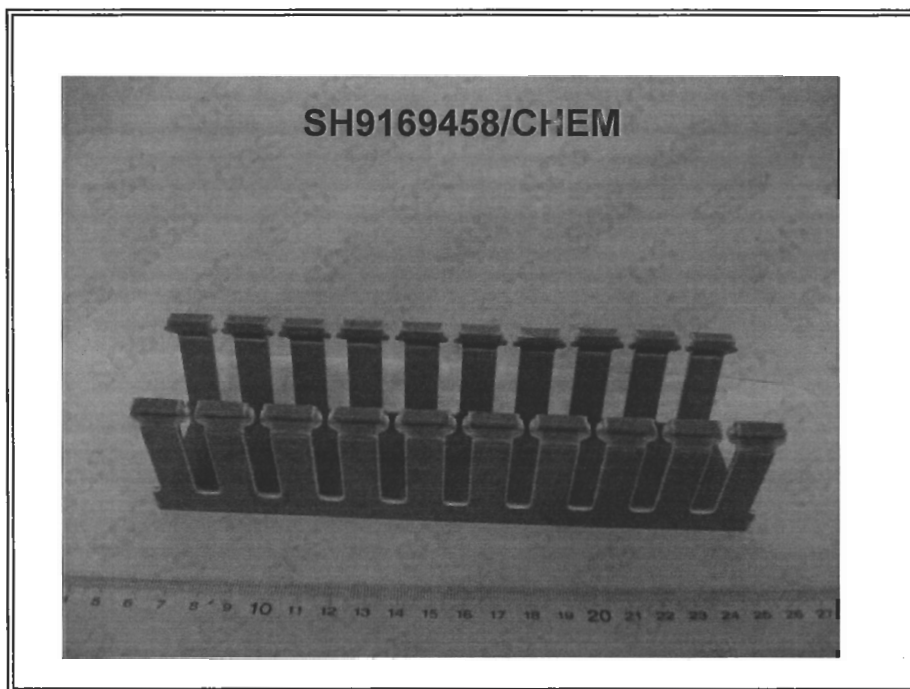
Test Report

No. SH9169458/CHEM

Date: Sep. 4, 2009

Page 4 of 4

Sample photo:



SGS authenticate the photo on original report only

*** End of Report ***

This document is issued by the Company subject to its General Conditions of Service printed overleaf, available on request or accessible at http://www.sgs.com/terms_and_conditions.htm and, for electronic format documents, subject to Terms and Conditions for Electronic Documents at www.sgs.com/terms_e-document.htm. Attention is drawn to the limitation of liability, indemnification and jurisdiction issues defined therein. Any holder of this document is advised that information contained hereon reflects the Company's findings at the time of its intervention only and within the limits of Client's instructions, if any. The Company's sole responsibility is to its Client and this document does not exonerate parties to a transaction from exercising all their rights and obligations under the transaction documents. This document cannot be reproduced except in full, without prior written approval of the Company. Any unauthorized alteration, forgery or falsification of the content or appearance of this document is unlawful and offenders may be prosecuted to the fullest extent of the law. Unless otherwise stated the results shown in this test report refer only to the sample(s) tested.